

MULTITEL MJ 375

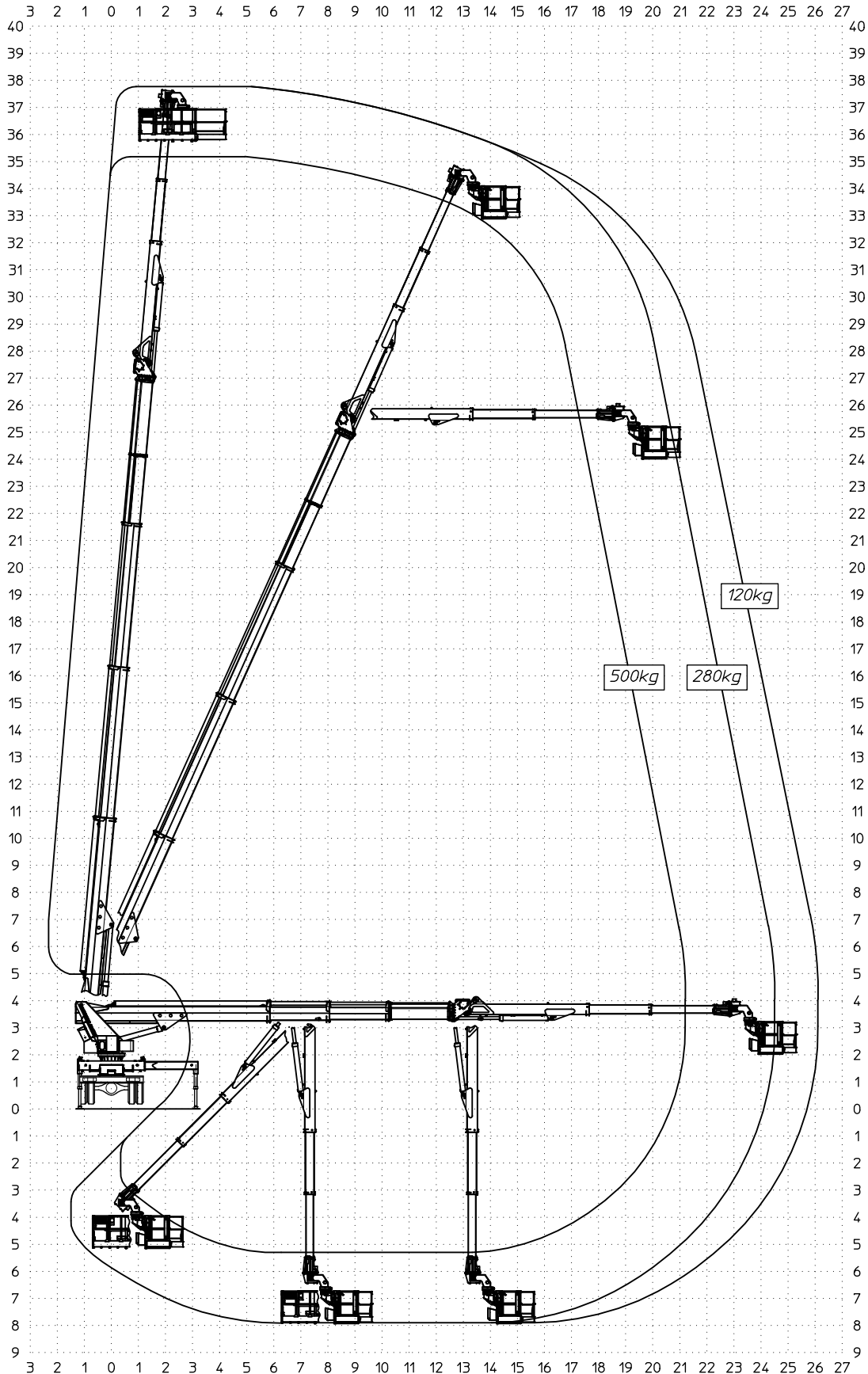
| Ente | Rev. | Descrizione | Data | Dis. | Contr. | Ap.AQ |
|--|------|-------------|----------|------|--------|-------|
| MRK | 0 | EMISSIONE | 28/05/14 | L.B. | | |
| INGOMBRO - SCHEDA 54/1 - Rev. 0 - 15/12/00 | | | | | | |

D52283

P.T.T.=19000 kg
 G.V.W.=19000 kg
 P.T.A.C.=19000 kg
 GES. GEWICHT=19000 kg

STABILIZZATORI COMPLETAMENTE ESTESI
 FULLY EXTENDED STABILIZERS
 STABILISATEURS COMPLETEMENT ETENDUS
 GANZ AUSGEFAHRENE STÜTZEN

| | 120Kg | 280Kg | 500Kg |
|----------------------|------------|------------|------------|
| SBRACCIO DI LAVORO | 26,1 m ±5% | 24,5 m ±5% | 21,2 m ±5% |
| WORKING OUTREACH | 26,1 m ±5% | 24,5 m ±5% | 21,2 m ±5% |
| DEPORT DE TRAVAIL | 26,1 m ±5% | 24,5 m ±5% | 21,2 m ±5% |
| SEITLICHE REICHWEITE | 26,1 m ±5% | 24,5 m ±5% | 21,2 m ±5% |



MULTITEL MJ 375

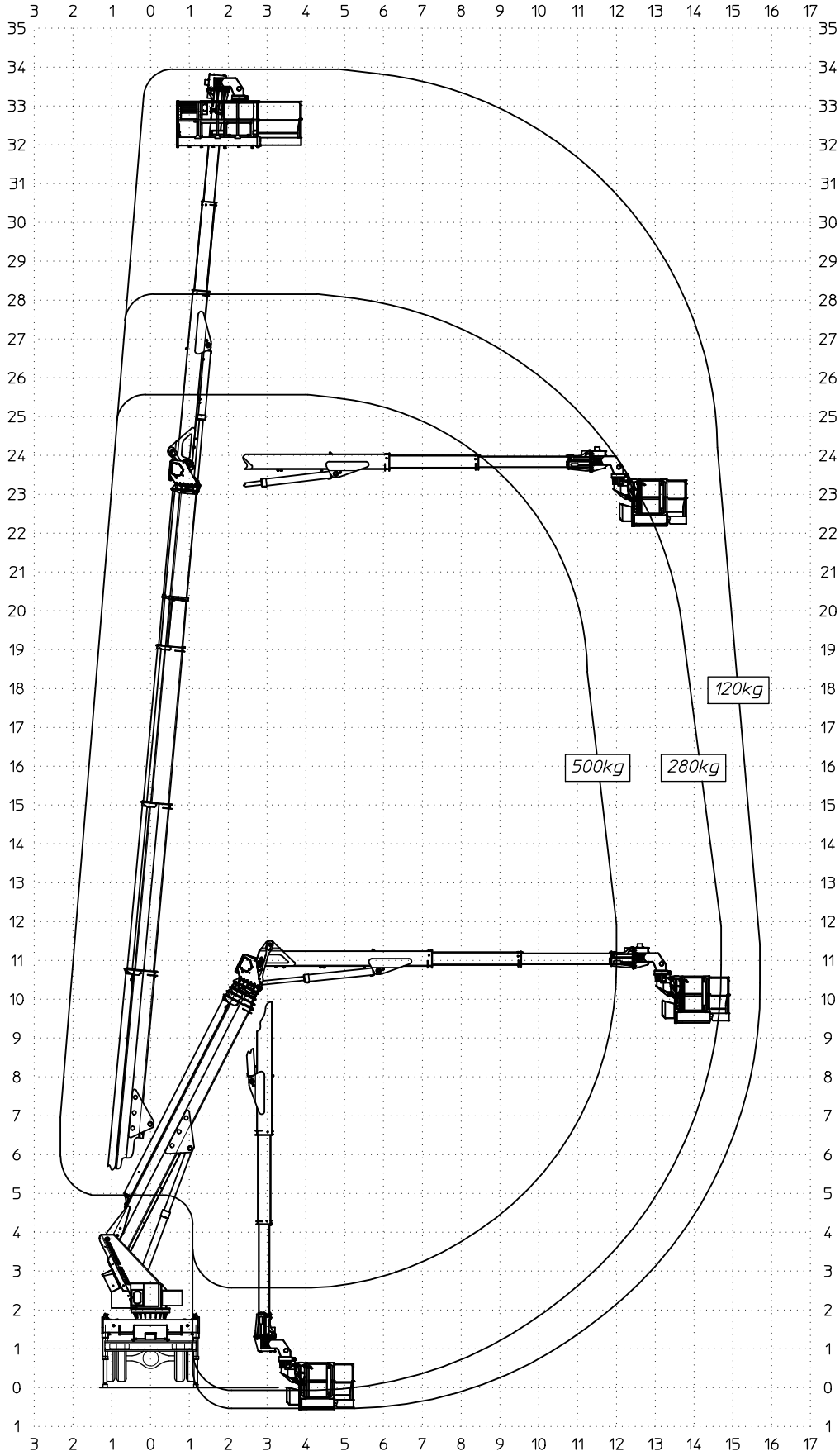
| Ente | Rev. | Descrizione | Data | Dis. | Contr. | Ap.AQ |
|--|------|-------------|----------|------|--------|-------|
| MRK | 0 | EMISSIONE | 28/05/14 | L.B. | | |
| INGOMBRO - SCHEDA 54/1 - Rev. 0 - 15/12/00 | | | | | | |

D52284

P.T.T.=19000 kg
 G.V.W.=19000 kg
 P.T.A.C.=19000 kg
 GES. GEWICHT=19000 kg

STABILIZZATORI IN SAGOMA
 STRAIGHT LINE STABILIZERS
 STABILISATEURS EN GABARIT
 STÜTZEN INNERHALB DER FAHRZEUGBREITE

| | 120Kg | 280Kg | 500Kg |
|----------------------|------------|------------|------------|
| SBRACCIO DI LAVORO | 15,7 m ±5% | 14,7 m ±5% | 12,0 m ±5% |
| WORKING OUTREACH | 15,7 m ±5% | 14,7 m ±5% | 12,0 m ±5% |
| DEPORT DE TRAVAIL | 15,7 m ±5% | 14,7 m ±5% | 12,0 m ±5% |
| SEITLICHE REICHWEITE | 15,7 m ±5% | 14,7 m ±5% | 12,0 m ±5% |



MULTITEL MJ 375

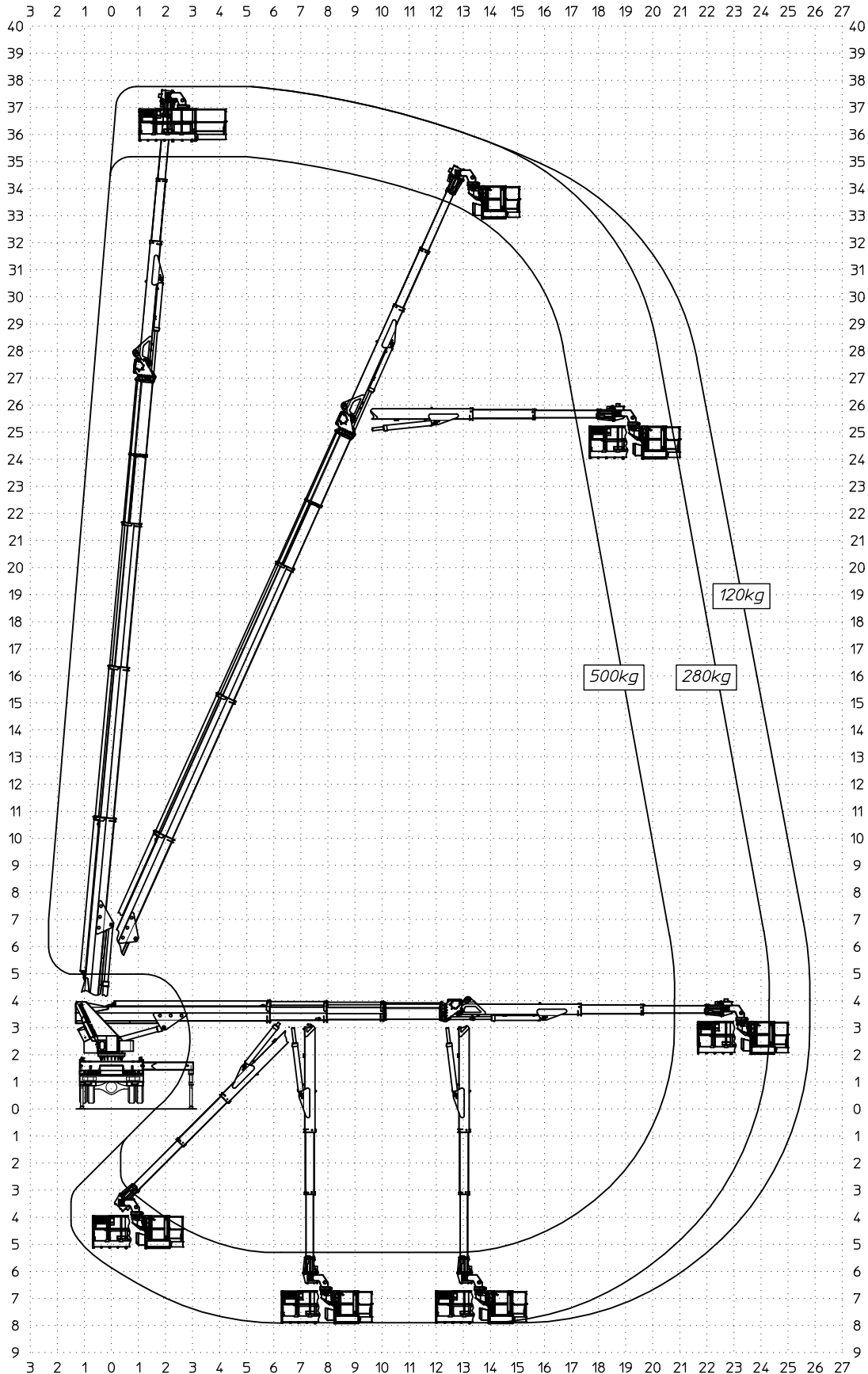
| Ente | Rev. | Descrizione | Data | Dis. | Contr. | Ap.AQ |
|---|------|-------------|----------|------|--------|-------|
| MRK | 1 | EMISSIONE | 28/10/14 | L.B. | | |
| DIAGRAMMA - SCHEDA 54/2 - Rev. 0 - 15/12/00 | | | | | | |

D52859

P.T.T.=18000 kg
 G.V.W.=18000 kg
 P.T.A.C.=18000 kg
 GES. GEWICHT=18000 kg

STABILIZZATORI COMPLETAMENTE ESTESI
 FULLY EXTENDED STABILIZERS
 STABILISATEURS COMPLETEMENT ETENDUS
 GANZ AUSGEFAHRENE STÜTZEN

| | 120kg | 280kg | 500kg |
|----------------------|------------|------------|------------|
| SBRACCIO DI LAVORO | 25,8 m ±5% | 24,3 m ±5% | 20,8 m ±5% |
| WORKING OUTREACH | 25,8 m ±5% | 24,3 m ±5% | 20,8 m ±5% |
| DEPORT DE TRAVAIL | 25,8 m ±5% | 24,3 m ±5% | 20,8 m ±5% |
| SEITLICHE REICHWEITE | 25,8 m ±5% | 24,3 m ±5% | 20,8 m ±5% |



MULTITEL MJ 375

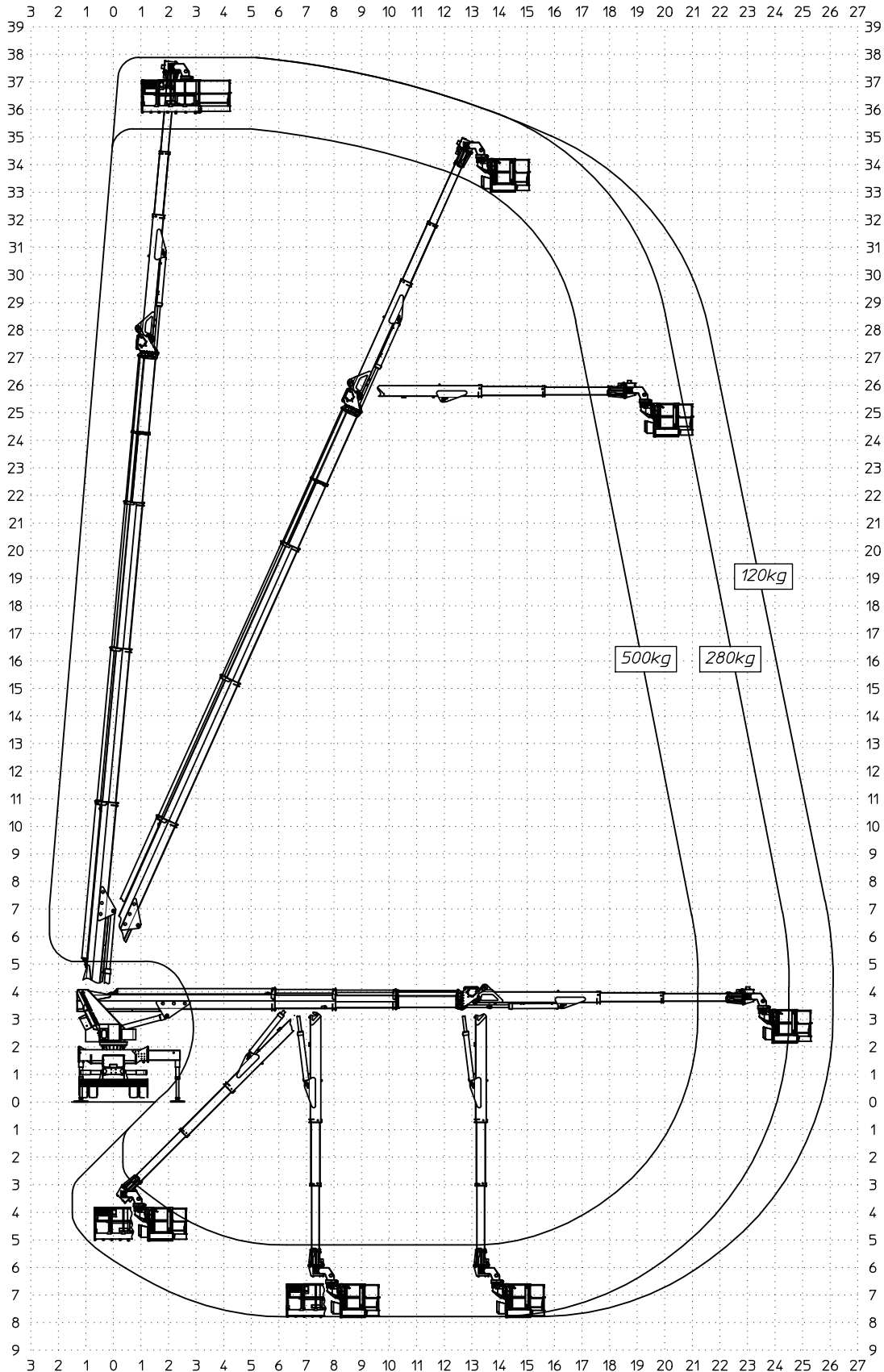
| Ente | Rev. | Descrizione | Data | Dis. | Contr. | Ap.AQ |
|---|------|-------------|----------|------|--------|-------|
| MRK | 0 | EMISSIONE | 10/06/16 | L.B. | | |
| DIAGRAMMA - SCHEDA 54/2 - Rev. 0 - 15/12/00 | | | | | | |

D56813

P.T.T.=26000kg
 G.V.W.=26000kg
 P.T.A.C.=26000kg
 GES. GEWICHT=26000kg

STABILIZZATORI COMPLETAMENTE ESTESI
 FULLY EXTENDED STABILIZERS
 STABILISATEURS COMPLETEMENT ETENDUS
 GANZ AUSGEFAHRENE STÜTZEN

| | 120Kg | 280Kg | 500Kg |
|----------------------|------------|------------|------------|
| SBRACCIO DI LAVORO | 26,1 m ±5% | 24,5 m ±5% | 21,2 m ±5% |
| WORKING OUTREACH | 26,1 m ±5% | 24,5 m ±5% | 21,2 m ±5% |
| DEPORT DE TRAVAIL | 26,1 m ±5% | 24,5 m ±5% | 21,2 m ±5% |
| SEITLICHE REICHWEITE | 26,1 m ±5% | 24,5 m ±5% | 21,2 m ±5% |



MULTITEL MJ 375

| Ente | Rev. | Descrizione | Data | Dis. | Contr. | Ap.AQ |
|---|------|-------------|----------|------|--------|-------|
| MRK | 0 | EMISSIONE | 12/12/17 | L.B. | | |
| DIAGRAMMA - SCHEDA 54/2 - Rev. 0 - 15/12/00 | | | | | | |

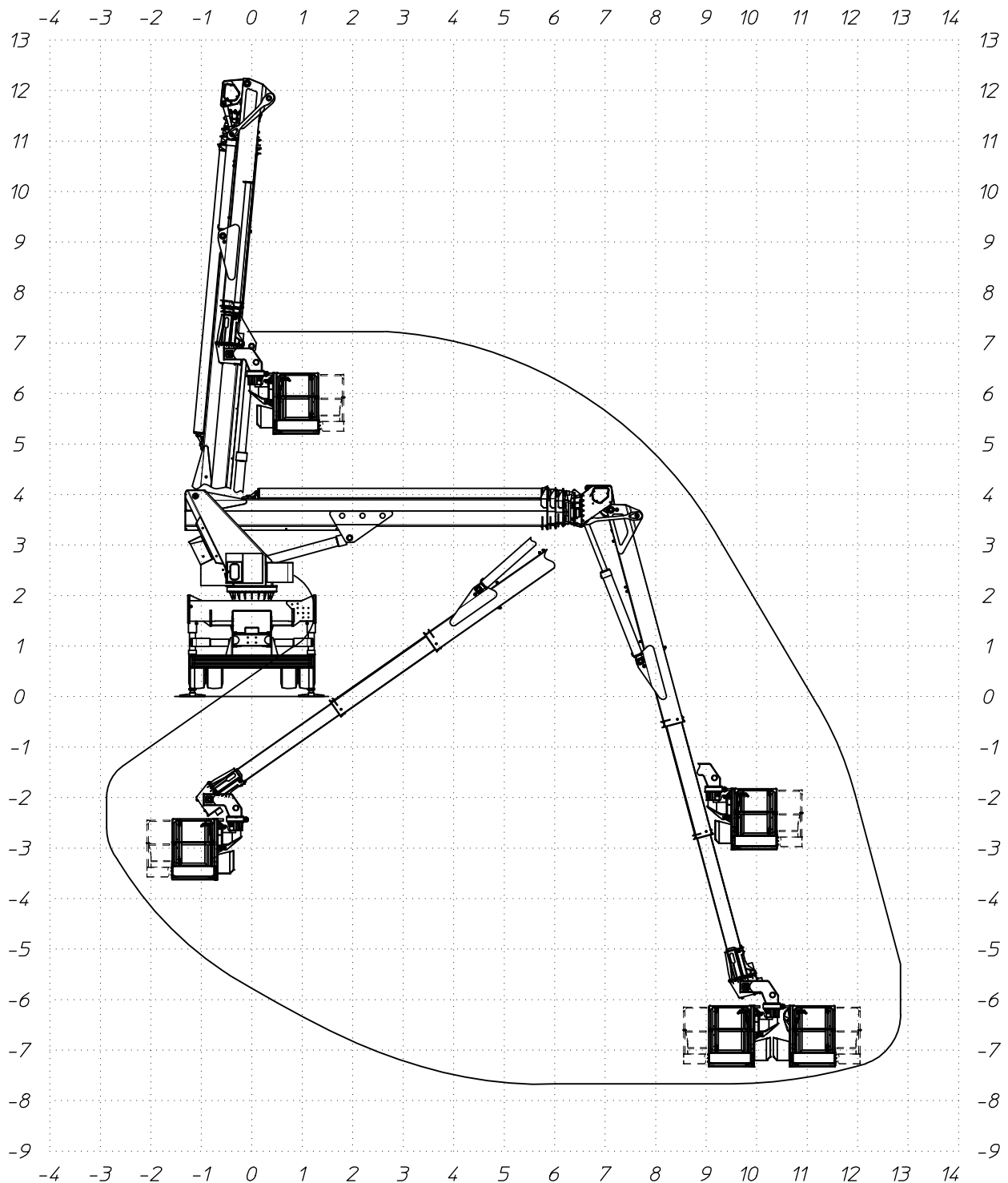
D56814-F

P.T.T.=26000kg
G.V.W.=26000kg
P.T.A.C.=26000kg
GES. GEWICHT=26000kg

STABILIZZATORI IN SAGOMA
STRAIGHT LINE STABILIZERS
STABILISATEURS EN GABARIT
STÜTZEN INNERHALB DER FAHRZEUGBREITE

SBRACCIO DI LAVORO 12,80 m ±5%
WORKING OUTREACH 12,80 m ±5%
DEPORT DE TRAVAIL 12,80 m ±5%
SEITLICHE REICHWEITE 12,80 m ±5%

280Kg



MULTITEL MJ 375

| Ente | Rev. | Descrizione | Data | Dis. | Contr. | Ap.AQ |
|---|------|-------------|----------|------|--------|-------|
| MRK | 0 | EMISSIONE | 17/05/17 | L.B. | | |
| DIAGRAMMA - SCHEDA 54/2 - Rev. 0 - 15/12/00 | | | | | | |

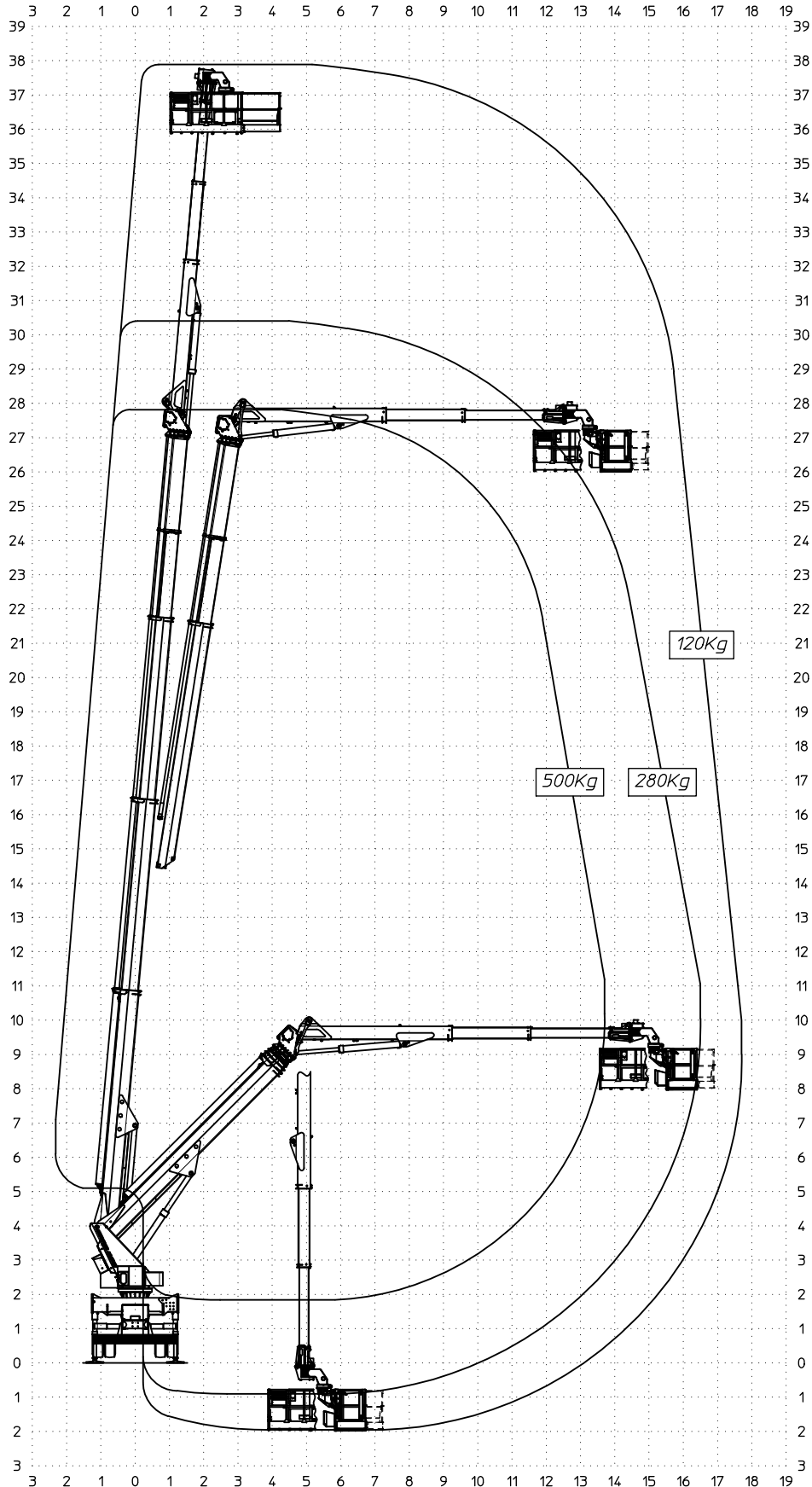
D60309

P.T.T.=26000 kg
 G.V.W.=26000 kg
 P.T.A.C.=26000 kg
 GES. GEWICHT=26000 kg

STABILIZZATORI IN SAGOMA
 STRAIGHT LINE STABILIZERS
 STABILISATEURS EN GABARIT
 STÜTZEN INNERHALB DER FAHRZEUGBREITE

SBRACCIO DI LAVORO
 WORKING OUTREACH
 DEPORT DE TRAVAIL
 SEITLICHE REICHWEITE

| | 120Kg | 280Kg | 500Kg |
|----------------------|------------|------------|------------|
| SBRACCIO DI LAVORO | 17.7 m ±5% | 16.5 m ±5% | 13.7 m ±5% |
| WORKING OUTREACH | 17.7 m ±5% | 16.5 m ±5% | 13.7 m ±5% |
| DEPORT DE TRAVAIL | 17.7 m ±5% | 16.5 m ±5% | 13.7 m ±5% |
| SEITLICHE REICHWEITE | 17.7 m ±5% | 16.5 m ±5% | 13.7 m ±5% |



MULTITEL MJ375

| Ente | Rev. | Descrizione | Data | Dis. | Contr. | Ap.AQ |
|--|------|-------------|----------|------|--------|-------|
| MRK | 0 | EMISSIONE | 10/06/16 | L.B. | | |
| INGOMBRO - SCHEDA 54/1 - Rev. 0 - 15/12/00 | | | | | | |

STABILIZZAZIONE PER AUTOCARRO CON PTT=26 TON.

E LARGHEZZA MASSIMA 2540mm.

STABILISATION POUR VEHICULES PTAC=26 TON.

ET LARGEUR MAXI 2540mm.

TRUCK STABILISATION FOR GVW=26 TON.

AND MAX WIDTH 2540mm.

ABSTUTZUNG FUR FAHRZEUG MIT GES. GEWICHT=26 TON.

UND MAX. BREITE 2540mm.

D56815

